



Welcome

Thank you for your purchase.

Your new thermostat will provide uniform and comfortable temperature control throughout every room in your property. We bring together technology, craftsmanship and the highest quality materials to provide you with a safe, reliable product combined with sleek, contemporary design.

Please read this installation/ programming manual for comprehensive instructions on installing and operating your thermostat. Please also ensure a suitably qualified person installs your thermostat and complies with all local regulations.

In the box you will find

Thermostat	1pc	Screws	2pc
User Guide	1pc	Floor Sensor (2.5m)	1pc
QC Passed	1pc	(Floor Sensor is Optional)	

ABOUT YOUR THERMOSTATS

BAC- 8000 series Modern square Touch Screen Room Thermostats .are designed to on / off control the fans and valves in air conditioner applications via comparison of the room temperature and settingtemp. As reaching the aim of comfort and saving energy.

MODEL DEFINITION

A: Two pipe; Control Fan Coil Unit and Two Wired Motorized Valve

M: Two pipe; Control Fan Coil Unit and 0-10V Motorized Valve

E: Four pipe; Control Fan Coil Unit and Two Wired Heat Valve andTwo Wired Cool Valve.

N: Modbus RTU communication

W : Wifi connection

K : Keycard

T : Clock

W2 : Window

P : Programmable

E : External Sensor

FEATURES

On Appearance

1. Negative black screen will bring you to a secret world.
2. 4.8 inch Large colorful screen display area, creates your colorful life.
3. Touch buttons to make simple operation.
4. Amazing Silver Frame opens your modern life.
5. The visible thickness above the wall is only 15mm.
6. The snap connection allows you to easily install.
7. 86mm hidden box and European 60mm round box is suitable.
8. White, black or brushed stainless steel for your selection.
9. Wrap-around cooling holes help heat to escape quickly and avoid affecting temperature detection.

On Functionality

1. Powerful functions are available such as Modbus/WIFI etc.,
2. 0.5°C Accuracy keeps temperature within the level you set.
3. Data memory when power is off.

TECHNICAL DATA

Power Supply: 95 ~ 240 VAC, 50 ~ 60HZ

Fan Relay Amps Resistance: 5A; Inductive: 3A

Valve Relay Amps Resistance: 3A; Inductive: 1A

Sensor: NTC3950, 10K

Set Temp. Range: 5 -35

Accuracy: ±1

Dispaly Temp. Range: 5 ~ 99

Ambient Temp.:0~45

Ambient Humidity: 5 ~ 95 % RH (Non Condensing)

Storage Temp.: -5~ 45 CTiming Error: < 1%

Power Consumption: <1.5W

Shell Material: PC +ABS (Fireproof)

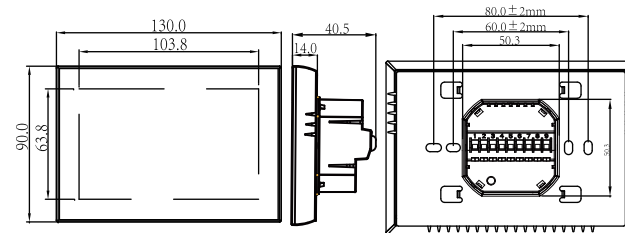
Installation Box: 86 * 86mm Square or European 60mm Round

BoxWire Terminals: Wire 2 X 1.5 mm² or 1 x2.5 mm²

Protection Class: IP20

Buttons: Capactive Touch Buttons

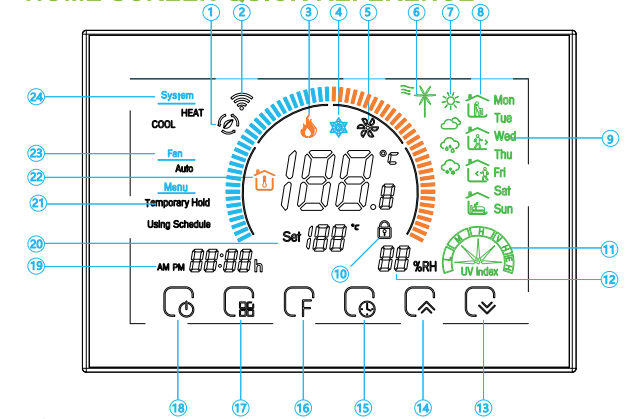
DIMENSION



CAUTION

Electrical Shock or Equipment Damage Hazard. Can shock individuals or short equipment circuitry. Disconnect power supply before installation.

HOME SCREEN QUICK REFERENCE



- | | | |
|------------------|-------------------------|----------------|
| ① WiFi (AP mode) | ⑨ Monday to Sunday | ⑰ Mode |
| ② Wifi (EZ mode) | ⑩ Lock | ⑱ Power |
| ③ Heating on | ⑪ Ultraviolet intensity | ⑲ Time |
| ④ Cooling on | ⑫ The humidity outdoor | ⑳ Set temp. |
| ⑤ Ventilation | ⑬ Down Button | ㉑ Menu |
| ⑥ Fan speed | ⑭ Up Button | ㉒ Room Temp. |
| ⑦ Weather | ⑮ Clock | ㉓ Fan auto |
| ⑧ Periods | ⑯ Fan | ㉔ System model |

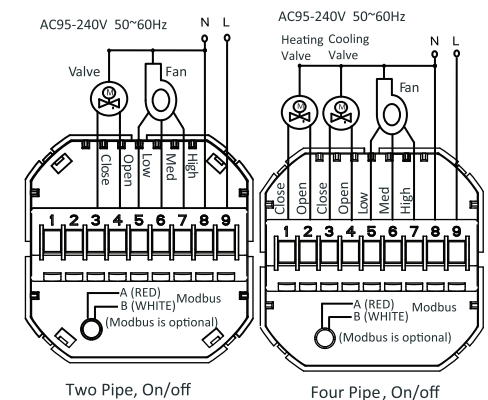
Note:

The Modbus version of the thermostat doesnot display humidity, weather, ultraviolet light, or weekday.

BEFORE WIRING AND INSTALLING

1. Read these instructions carefully. Failure to follow them could damage the product or cause a hazardous condition.
2. Check the rathings given in the instructions and on the product to make sure the product is suitable for your application.
3. Installer must be a trained, experienced service technician.
4. After installation is complete, check out product operation as provided in these instructions.

WIRING

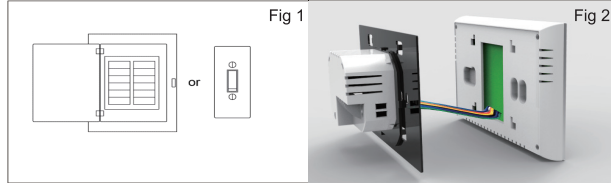


INSTALLATION

Your thermostat is suitable for installation within a standard 86mm pattress box or European 60mm pattress box.

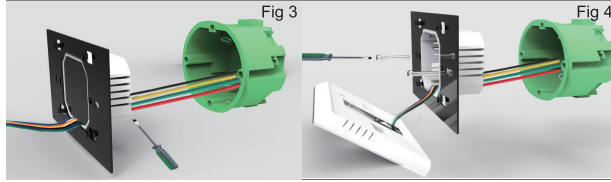
Step 1. Keep power off. See Fig 1.

Step 2. Remove the mounting Plate by rotating the LCD part. See Fig 2.



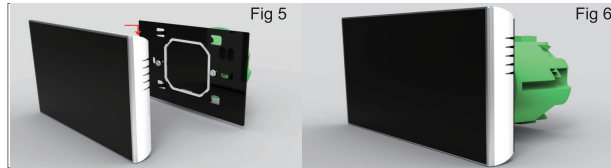
Step 3. Connect power supply, load into the appropriate terminals. (see “Wiring your thermostat” for details and Fig 3).

Step 4. Fix the mounting plate into the wall with screws in



Step 5. Fasten body of thermostat and the mounting plate through rotating. See Fig 5.

Step 6. Installation complete. See Fig 6.



OPERATION

During Power On

1.Power On/off: Press to turn the thermostat on/off.

2.Setting the temperature

Press to set temperature.

3.Adjusting the Clock

Press the min of time will flashes;

Touch the icon / to set your minute.

Then press , the hour of time will flash ; Touch the icon / to set your hour.

Then press , the week of time will flash; Touch the icon / to set your week.

4.Locking your Thermostat

Press and hold the and for 5 seconds to lock/unlock your thermostat
In item 3 of high senior options, you can select full lock or half lock.

A separate schedule may be set for weekdays (Mon – Fri) and for weekends (Sat or Sun).

5. Setting the fan

Press to select the fan speed AUTO, HIGH, MED, LOW.

During Power Off

7.Setting the Functions and Options

When the device is off, press to enter the advanced options
Then press to scroll through the available functions, and use the / arrows to change the available options. All settings are confirmed automatically.

Code	Function	Setting and options	Default
1	Temperature compensation	-9 to +9°C	-2
2	Fan Control	00: When room temp. Reaches the setpoint, the fan will turn off. 01: When room temp. Reaches the setpoint, the fan will turn to low speed.	0
3	Button locking	00: All buttons are locked except power button. 01: All buttons are locked.	01
4	Heat/Cool	00: Cool only 01: Heat/Cool	01
5	Min. Set Temp.	5-15°C	05
6	Max. Set Temp.	15-35°C	35
7	Time Display	00:12 hours 01:24 hours	1
8	Deadband Temp.	1-5°C	1
9	Standby Brightness of Backlight	03-99 ; bigger value, more brightness	04
A	Modbus IP address	0X01-0XFF	01
B	Baudrate	1: 9600; 2: 19200; 3: 38400; 4: 56000; 5: 115200	1
C	Device Program Version Number		112

SIMPLE EXCEPTION HANDLING

No.	Phenomenons	Handling
1	Power is on but without display.	* Check if the terminals between LCD panel and Power Unit Box is loosen.
2	Without output but display works.	* Use a new LCD panel or new Power Unit Box to replace the old one.
3	Room Temp. Is a little different from the actual.	* Do temperature calibration in item 1 of high senior options

SERVICE

Your thermostat carries an 24 months warranty from date of purchase. Service outwith the warranty period may incur a charge. More detail please contact with us directly.